

## AREA Series Standard

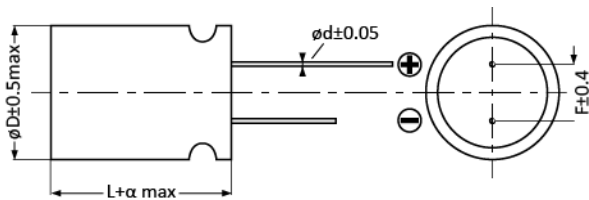
- Standard radial lead type
- Rated voltage: 2.5~16Vdc
- Endurance: 2,000hrs at 105°C
- Suitable for DC-DC converters, Voltage regulators and Decoupling applications
- RoHS Compliant



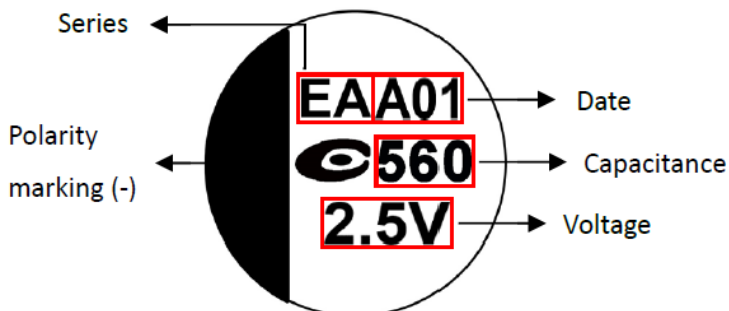
### Specification

Category Temperature Range	-55 to 105°C	Rated Voltage Range	2.5 to 16Vdc
Rated Capacitance Range	100 to 1000 (μF)	Capacitance Tolerance	±20% (M)
Surge Voltage	Rated voltage X 1.15 (at 105°C)	Dissipation Factor	0.1 max. (at 20°C 120Hz)
Leakage Current	Shall not exceed values shown in standard ratings. (at 20°C after 2 mins.)		
Endurance	105°C, 2000hrs, rated voltage applied		
	Appearance	No significant damage	
	Capacitance Change	≤ ±20% of the initial value	
	DF(tanδ)	≤ 150% of the initial specified value	
	ESR	≤ 150% of the initial specified value	
	Leakage current	≤ The initial specified value	
Damp Heat (Steady State)	60°C, 90 to 95% RH, 1000hrs, voltage applied		
	Appearance	No significant damage	
	Capacitance Change	≤ ±20% of the initial value	
	DF(tanδ)	≤ 150% of the initial specified value	
	ESR	≤ 150% of the initial specified value	
	Leakage current	≤ The initial specified value	
Surge Voltage	1,000 cycles and each one includes charge with surge voltage specified at 105°C for 0.5min through a protective resistor (R=1kΩ) and discharge for 5.5min.		
	Appearance	No significant damage	
	Capacitance Change	≤ ±20% of the initial value	
	DF(tanδ)	≤ 150% of the initial specified value	
	ESR	≤ 150% of the initial specified value	
	Leakage current	≤ The initial specified value	

### Dimensions and Marking



SIZE Code	øD ± 0.5max	L	α	ød ± 0.05	F ± 0.4
06X5	6.3	5.0	-0.5~1.0	0.45	2.5
06X8	6.3	8.0	-0.5~1.0	0.6	2.5
08X8	8.0	8.0	-0.5~1.0	0.6	3.5
08A2	8.0	12.0	-0.5~1.0	0.6	3.5
10A2	10.0	12.0	-0.5~1.0	0.6	5.0



AREA Series **Standard**

Standard Ratings

WV/Vdc (SV)	Cap (μF)	Size Code	Leakage Current (μA)	ESR (mΩmax/ 20°C, 100k to 300kHz)	Rated Ripple Current (mArms/ 105°C /100kHz)	Part No.
2.5 (2.9)	560	06X5	280	10	3,900	2R5AREA561M06X5
	820	08X8	410	10	5,230	2R5AREA821M08X8
6.3 (7.2)	220	06X5	277	15	3,160	6R3AREA221M06X5
	330	06X5	416	17	3,390	6R3AREA331M06X5
	470	08X8	592	15	4,210	6R3AREA471M08X8
	820	08A2	1,033	12	4,710	6R3AREA821M08A2
16 (18.4)	100	06X5	320	24	2,490	160AREA101M06X5
	100	06X8	320	25	2,820	160AREA101M06X8
	1,000	10A2	3,200	12	5,400	160AREA102M10A2