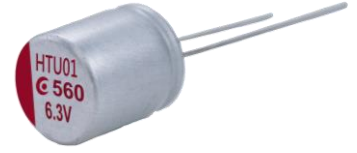


ARHT Series High Endurance & Voltage

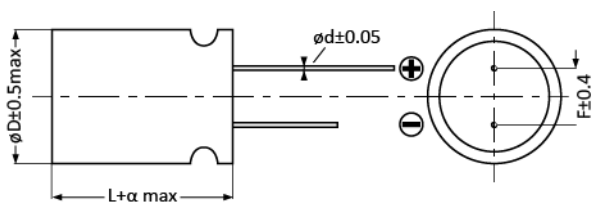
- Rated Voltage: 25~63Vdc
- Endurance 2000hrs at 125°C
- Suitable for AC-DC、DC-DC converters, voltage regulators and decoupling applications
- RoHS Compliant



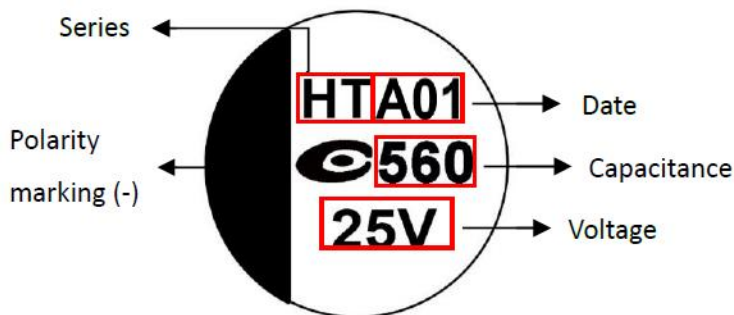
Specification

| | | | |
|----------------------------|--|---------------------------------------|-------------------------|
| Category Temperature Range | -55 to 125°C | Rated Voltage Range | 25 to 63Vdc |
| Rated Capacitance Range | 100 to 680 (μF) | Capacitance Tolerance | ±20% (M) |
| Surge Voltage | Rated voltage x1.15(at 125°C) | Dissipation Factor | 0.12max.(at 20°C 120Hz) |
| Leakage Current | Shall not exceed values shown in standard ratings. | | |
| Endurance | 125°C, 2000hrs, rated voltage applied | | |
| | Appearance | No significant damage | |
| | Capacitance Change | ≤ ±20% of the initial value | |
| | DF(tanδ) | ≤ 200% of the initial specified value | |
| | ESR | ≤ 200% of the initial specified value | |
| | Leakage current | ≤ The initial specified value | |
| Damp Heat (Steady State) | 60°C, 90 to 95% RH, 1000hrs, voltage applied | | |
| | Appearance | No significant damage | |
| | Capacitance Change | ≤ ±20% of the initial value | |
| | DF(tanδ) | ≤ 200% of the initial specified value | |
| | ESR | ≤ 200% of the initial specified value | |
| | Leakage current | ≤ The initial specified value | |
| Surge Voltage | 1,000 cycles and each one includes charge with surge voltage specified at 125°C for 0.5min through a protective resistor (R=1kΩ) and discharge for 5.5min. | | |
| | Appearance | No significant damage | |
| | Capacitance Change | ≤ ±20% of the initial value | |
| | DF(tanδ) | ≤ 200% of the initial specified value | |
| | ESR | ≤ 200% of the initial specified value | |
| | Leakage current | ≤ The initial specified value | |

Dimensions and Marking



| SIZE Code | øD±0.5 max | L | α | ød±0.05 | F±0.4 |
|-----------|------------|------|----------|---------|-------|
| 08X8 | 8.0 | 8.0 | -0.5~1.0 | 0.6 | 3.5 |
| 08A2 | 8.0 | 12.0 | -0.5~1.0 | 0.6 | 3.5 |
| 10A2 | 10.0 | 12.0 | -0.5~1.0 | 0.6 | 5.0 |



ARHT Series **High Endurance & Voltage**

| WV/Vdc (SV) | Cap (μ F) | Size Code | Leakage Current (μ A) | ESR ($m\Omega$ max/20°C, 100k to300kHz) | Rated Ripple Current (mA rms/100kHz) | | Part No. |
|----------------|-------------------|--------------|----------------------------------|--|---|---|-----------------|
| | | | | | $\leq 105^\circ\text{C}$ | $105^\circ\text{C} <$ $\leq 125^\circ\text{C}$ | |
| 25 (28.8) | 100 | 08X8 | 500 | 24 | 2,900 | 1,160 | 250ARHT101M08X8 |
| | 220 | 08A2 | 1,100 | 18 | 4,250 | 1,700 | 250ARHT221M08A2 |
| | 330 | 08A2 | 1,650 | 18 | 4,250 | 1,700 | 250ARHT331M08A2 |
| | 470 | 08A2 | 2,350 | 18 | 4,250 | 1,700 | 250ARHT471M08A2 |
| | 560 | 10A2 | 2,800 | 16 | 4,700 | 1,880 | 250ARHT561M10A2 |
| | 680 | 10A2 | 3,400 | 16 | 4,700 | 1,880 | 250ARHT681M10A2 |
| 35 (40.3) | 100 | 08A2 | 700 | 26 | 2,950 | 1,180 | 350ARHT101M08A2 |
| | 150 | 08A2 | 1,050 | 26 | 2,950 | 1,180 | 350ARHT151M08A2 |
| | 180 | 08A2 | 1,260 | 26 | 2,950 | 1,180 | 350ARHT181M08A2 |
| | 220 | 08A2 | 1,540 | 26 | 2,950 | 1,180 | 350ARHT221M08A2 |
| | 330 | 10A2 | 2,310 | 24 | 3,400 | 1,360 | 350ARHT331M10A2 |
| | 390 | 10A2 | 2,730 | 24 | 3,400 | 1,360 | 350ARHT391M10A2 |
| 50 (57.5) | 180 | 10A2 | 1,800 | 28 | 2,620 | 1,048 | 500ARHT181M10A2 |
| | 220 | 10A2 | 2,200 | 28 | 2,620 | 1,048 | 500ARHT221M10A2 |
| 63 (72.5) | 100 | 10A2 | 1,260 | 32 | 2,550 | 1,020 | 630ARHT101M10A2 |
| | 150 | 10A2 | 1,890 | 28 | 2,550 | 1,020 | 630ARHT151M10A2 |
| | 180 | 10A2 | 2,268 | 28 | 2,550 | 1,020 | 630ARHT181M10A2 |